



FDCV GROUP SDN. BHD.

(1026559-H)

NO. 13A, LORONG TEKNOLOGI B,
NOUVELLE INDUSTRIAL PARK,
TAMAN SAINS SELANGOR 1,
KOTA DAMANSARA, PJU 5
47810 PETALING JAYA,
SELANGOR, MALAYSIA.

EMAIL

HELLO@FDCVGROUP.COM

WEBSITE

WWW.FDCVGROUP.COM



SCAN & VISIT OUR WEBSITE

ACHO HOUSE, BUKIT JALIL, MALAYSIA



fdcv
GROUP

VOL. 2

VOL. 2

On the cover:

Cho House is an elegant and sculptural family haven located on recent highly sought after city, Bukit Jalil. Embracing the site context setting while retaining privacy was a primary concern of the client and project brief.

Our response was to design a simple, uncluttered composition of stacked block forms interlinked and cut open to exposed the interior spaces internally. The composition of the building consists of two white, elongated boxes shifted against each other. They include not only rooms but also open voids. The warm colour of the wood emphasizes the niches and contracts with the ascetic white of the building.

Large sliding glass doors open fully to dissolve the boundary between interior and exterior spaces. Terraces flow off the main living areas and lead to a private garden containing a swimming pool and water feature.

The living areas within the house are restrained and minimal. The entire ground floor is open and inter-connected yet does not feel stark or sterile. The kitchen is carefully detailed with a functional cooking area concealed in a separate annex, allowing the occupants to enjoy the primary space without clutter.

This is a building that celebrates its location and compliments the site context and surrounding landscape, yet still provides a comfortable retreat away from a very busy urban environment. The use of simple line and geometry form is distinctive of our studio and find its best expression in Cho House.

For more details about this unit, please see page 22 or scan QR code below :



"UNFOLDING IDEAS" IS
OUR TAGLINE.
UNFOLD IDEAS CLOSER TO
PERFECTION.



unfolding ideas



“IN SHORT, A GOOD FUNCTIONAL DESIGN WILL CREATE A GOOD CULTURE OF LIVING, AND THAT WILL ADD VALUE TO THE ARCHITECTURE.”

Founded in 2010, FDCV Group [Function . Design . Culture . Value] is an Architectural & Interior Design company established by a group of like-minded partners who shares the same core values and passion in Architecture and Design.

We believe that the notion of design for values, or value-sensitive design, is founded on the idea that design principles are related to functional, ethical, social, and culture values.

In architecture, a general relation between values and design is present throughout the history of the discipline. “In short, a good functional design will create a good culture of living, and that will add value to the architecture.”

We provide a holistic solution to the client’s Architectural & Design needs; with our core strengths being functional design approach, through a pragmatic and systematic evaluation of a client’s brief, plus extensive collaboration with different parties and a keen eye on details.

We strive to achieve a balance between all aspects of work; working creatively within the usual fundamental constraints in the industry to provide original and innovative solutions to problems.

OUR SERVICES

ARCHITECTURE & MASTER PLANNING

Context plays a big part in our design approach. We believe that every design, each building, on its own site is unique. There is no one size fits all in Architecture. Thus, our ethos is to always create a functional building, unique in its own right, yet respectful towards the context, be it the site and surroundings, social or cultural context.

Design aside; our firm also is well versed in the practical side of project management, with our partners having extensive experience in project managements and implementations. We take into consideration on the construction methods, costs, and time when we start on the design, allowing for a more efficient and cost-effective project.

INTERIOR DESIGN & SPATIAL PLANNING

Complementing our Architectural services, FDCV Group also offers our unique approach to Interior Design and Spatial Planning.

Our comprehensive approach takes into account of social, cultural and human behavioural patterns, enabling us to produce spatial qualities that are sensitive to the needs of the end users. We believe that a good design always starts with a good understanding of the usage patterns of users, and we strive to do so by being attentive and collaborative with the clients and other relevant parties.

The palette of materials, usage of colours, choice of finishes, and most importantly, the layout of the interior space plays an integral role in our design approach. We believe in keeping abreast with the latest technology and materials available on the market, allowing us to update and advise the clients on this advancement, and implementing in our design if they suit our needs.



WHY FDCV

HERE ARE SOME OF THE MANY REASONS
YOU'LL ENJOY WORKING WITH US.



EXTENSIVE EXPERIENCE

Since 2010, we have completed 10 hospitals, and over 120+ residential and commercial projects that worth more than one billion Ringgit Malaysia value.



12 MONTHS WARRANTY

We guarantee a job well done so you can just roll your luggage into your new dream premise. We will inspect the premise again in 12 months time to ensure all defects are rectified before issue Certificate of Making Good defects.



FAST TURN- AROUND TIME

Once we understand your design requirements, our established procedures will ensure the availability of necessary resources and complete the project within agreed timeline.



NO HIDDEN COST

Our team will walk you through a fully-transparent cost breakdown. We offer reasonable pricing as we have years of industry experience in streamlining our operations and achieve better cost efficiency.



WORRY FREE

We provide all-in-one solution where we oversee the whole design and build process to save you the trouble of coordinating between different parties involved and avoid miscommunication.



VALUE-ADDED

We incorporated advice from our panel consultants, i.e. Feng Shui consultant, Planner, C&S engineer, M&E engineer, and other related specialists, resulting in a peace of mind solution for your purpose.



CENTURION LAND HOUSING DEVELOPMENT, BUKIT LEDANG, MALAYSIA

ALL PROJECTS

RESIDENTIAL DEVELOPMENT

CENTURION LAND HOUSING DEVELOPMENT BUKIT LEDANG	PG 14-15
LUXE VILLE HOUSING DEVELOPMENT BUKIT LEDANG, KL	PG 16-17
MARINA GATEWAY LUMUT	PG 18-19

PRIVATE RESIDENTIAL

CHO HOUSE BUKIT JALIL	PG 22-23	CYC HOUSE CHERAS	PG 32-33
ALE HOUSE SEAPARK	PG 24-25	DIO HOUSE KL SENTRAL	PG 34-35
SOO HOUSE CHERAS	PG 26-27	PEY HOUSE DAMANSARA PERDANA	PG 36-37
TAD HOUSE DAMANSARA HEIGHTS	PG 28-29	BOS HOUSE BUKIT JALIL	PG 38-39
YAP HOUSE MENJARALA	PG 30-31		



GALE HOUSE, SEAPARK, MALAYSIA

66 - 69

56 - 63

42 - 53



@VISION CITY SALES GALLERY, NILAI, MALAYSIA



@H BOUTIQUE HOTEL, SRI PETALING, MALAYSIA



@COLUMBIA ASIA HOSPITAL

SALES GALLERY

VISION CITY SALES GALLERY	PG 66-67
NILAI	
RESIDENSI LILI SHOW ROOM	PG 68-69
NILAI	

WEIL HOTEL	PG 62-63
IPOH, PERAK	

D'WHARF RESIDENCE	PG 60-61
PORT DICKSON, N.S.	

H BOUTIQUE HOTEL	PG 58-59
SRI PETALING	

EXCELSIOR HOTEL	PG 56-57
IPOH, PERAK, MALAYSIA	

HOTEL

KLIDC DENTAL CLINIC	PG 52-53
----------------------------	-----------------

CHERAS EXPANSION	PG 50-51
------------------	-----------------

MEDAN	PG 48-49
-------	-----------------

SETAPAK	PG 46-47
---------	-----------------

SEREMBAN	PG 44-45
----------	-----------------

CHERAS	PG 42-43
--------	-----------------

HEALTHCARE

90 - 97

78 - 87

72 - 75



@PRESTIGE WATCH, GENTING HIGHLANDS, MALAYSIA



@UNION COFFEE, 1MK, MALAYSIA



@FDCV GROUP WORKPLACE, KOTA DAMANSARA, MALAYSIA

RETAIL

IFRUIT	PG 90-91
KLANG	
PRESTIGE WATCH	PG 92-93
GENTING HIGHLANDS	
RUNNING LAB	PG 94-95
PAVILLION KL	
ZCOVA	PG 96-97
KOTA DAMANSARA	

THE LIBRARY COFFEE BAR	PG 86-87
GIZA MALL	

QUIZNOS SUB	PG 84-85
ONE UTAMA	

JOHNNY ROCKETS	PG 82-83
SUNWAY PYRAMID	

THE BAR	PG 80-81
EMPIRE DAMANSARA	

UNION COFFEE	PG 78-79
1MK	

FOOD & BEVERAGE

SETARA PELANA WORKPLACE	PG 74-75
PUBLIKA	

FDCV GROUP WORKPLACE	PG 72-73
KOTA DAMANSARA	

WORKPLACE

RESIDENTIAL DEVELOPMENT

"We believe that the notion of design for values, or value-sensitive design, is founded on the idea that design principles are related to functional, ethical, social, and culture values."

– FDCV GROUP SDN BHD



CENTURIAN LANDS VILLA

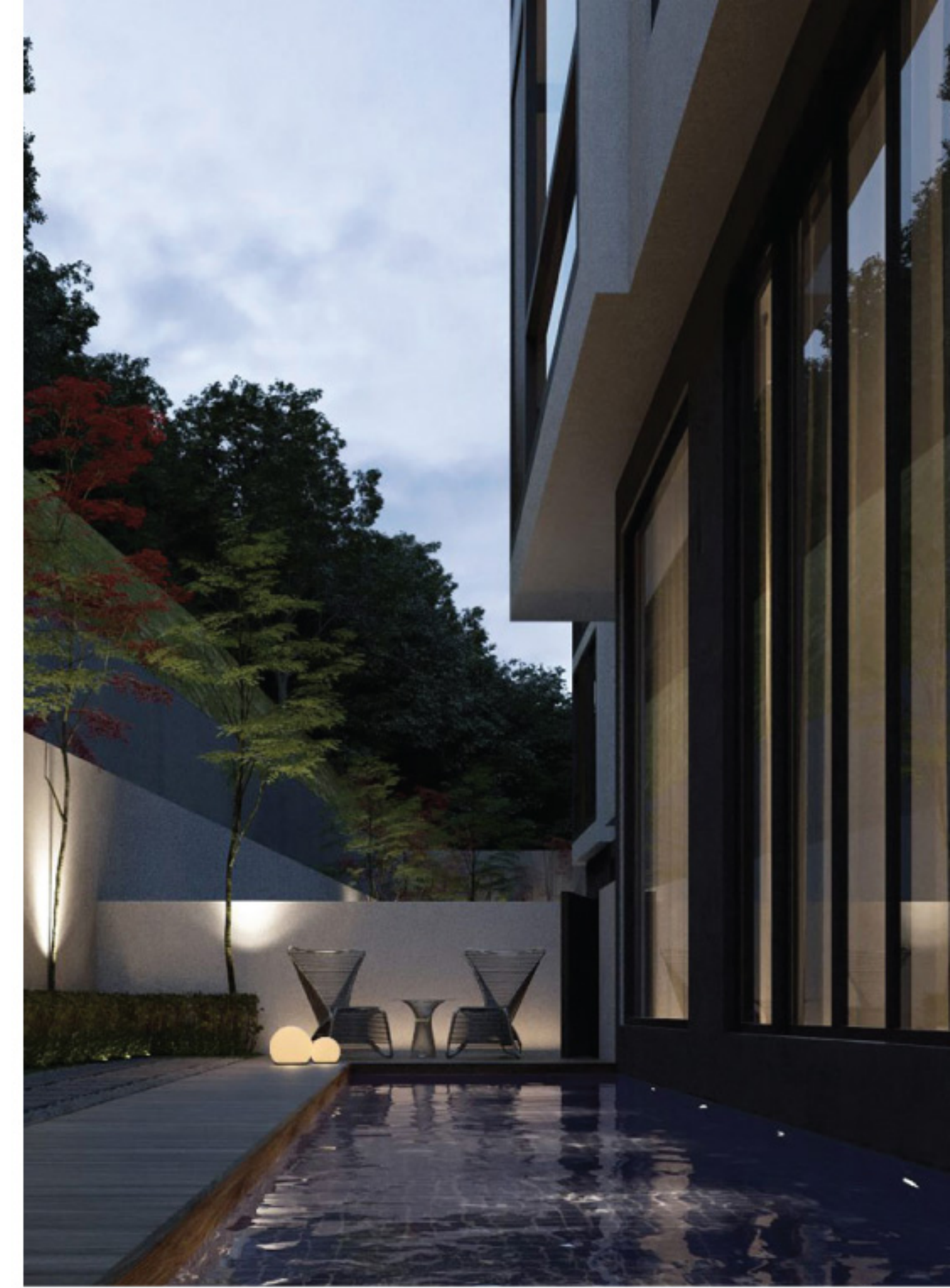
BUKIT LEDANG, KUALA LUMPUR, MALAYSIA

2014 - PRESENT (ON-GOING)

Located within the vicinity of Bukit Tunku and Bukit Damansara, surrounded by lush foresty, a place of peace and serenity in the heart of the hustle bustle of Kuala Lumpur City.

FDCV was commissioned to conceptualize and plan the development of Semi-D Villas at Bukit Ledang, creating villas that blend in harmony with the local surrounding, shrouded in lush greens, a home away from the busyness of KL city living. With the concept is to create villas that marry with the locality – nature surrounding, the touch, sound and sight that lets residents forget the hustle and bustle Jalan Tun Razak just a block away. The beautifully designed 120 ft. swimming pool connects each villa and create a picturesque scene of water-floating villas against a beautiful green forest backdrop.

Consisting of 8 beautifully designed villas – 5-storey private sanctuary including the basement, 6 rooms, 8 baths, and 5 car parking space, equipped with a beautiful roof top deck and designated barbeque area and private lift, this development boast of elegance and luxury relaxation in the private enclave of Bukit Ledang.



CENTURIAN LANDS VILLA

Location	Bukit Ledang, KL, Malaysia
Type	Residential Development
Land Size	0.48 acre
Total Units	8 units
Project	Architecture

Opposite : Entrance arch integrating with security guardhouse overlooking to a big welcoming green wall.
Top : Backyard with private water feature and landscaping.
Bottom : Seamless between swimming pool and lanai creating a picturesque scene of water-floating villas.

LUXE VILLE VILLA

BUKIT LEDANG, KUALA LUMPUR, MALAYSIA

2014 - PRESENT (ON-GOING)



LUXE VILLE VILLA

Location	Bukit Ledang, Kuala Lumpur, Malaysia
Type	Residential Development
Land Size	0.52 acre
Total Units	8 units
Project	Architecture

Opposite : Luxe Ville Villa is a home built for contemplation and delight, it is conceived to heighten the consciousness of living through surrounding lush forestry.

Top : The design of the house is a response to hide away the hectic lifestyle by proposing one of the spotlight facility – 120ft golf putting greenscape.

Bottom : The villa is equipped with a beautiful roof top deck and perfect for social gatherings with designated barbeque area and roof top garden.

It is located within the vicinity of Bukit Tunku and Bukit Damansara, surrounded by lush forestry, a place of peace and serenity in the heart of the hustle bustle of Kuala Lumpur City.

Consisting of 8 villas- 5-storey private sanctuary, equipped with a functional roof top deck, and private pool for each individual unit. The beautifully designed 120ft. golf putting greenscape connects each villa and create a picturesque scene.

This development boast of elegance and luxury relaxation in the private enclave of Bukit Ledang.





MARINA GATEWAY RESIDENTIAL APARTMENT

LUMUT, PERAK, MALAYSIA

2014 - PRESENT (ON-GOING)



MARINA GATEWAY RESIDENTIAL APARTMENT

Location	Lumut, Perak, Malaysia
Type	Residential Development
Land Size	4.43 acre
Total Units	324 units
Project	Architecture

Opposite : Marina Gateway from street view.

Top : Aerial view looking at 24 units of commercial shops with condominium block as backdrop.

Bottom Left : Shop design is approached in modern concept with large openings to face the road frontage. All the first floor units are connected with external corridor for better social connectivity.

Bottom Right : Red colour acrylic painted half basketball court is facilitated.

Sprawling over 4.43 acres of Land in Lumut, Perak, the brief was to design for a mixed development consisting of a medium cost condominium and a college at ground level, a hotel block and commercial shop units.

We approach the site with a few major considerations: site context, exposure and frontage, program and linkage.

The commercial shop units were arranged to face the main road to maximize exposure and frontage, while the rear units were to face the condominium block to allow for a visual linkage and connection. The hotel sits at a prominent corner of the site, providing a sign of gateway and focal point for the entry of the development.

300 units of residential apartments were planned for, while 24 units of 3 storey shop lots were allowed. The hotel consist of 117 rooms with facilities at roof and ground level.



PRIVATE RESIDENTIAL

"A perfect home meets all the needs of the family, and while the house ticks the boxes for the fundamentals of sustainable living, with a warmth of materiality and connection to the context that will be enjoyed for many years to come."

- FDCV GROUP SDN BHD

CHO HOUSE

BUKIT JALIL, MALAYSIA

2019 - PRESENT (ON-GOING)

Cho House is an elegant and sculptural family haven located on recent highly sought after city, Bukit Jalil. Embracing the site context setting while retaining privacy was a primary concern of the client and project brief.

Our response was to design a simple, uncluttered composition of stacked block forms interlinked and cut open to exposed the interior spaces internally. The composition of the building consists of two white, elongated boxes shifted against each other. They include not only rooms but also open voids. The warm colour of the wood emphasizes the niches and contracts with the ascetic white of the building.



CHO HOUSE

Location	Bukit Jalil
Type	Private Residential
Size	6,830 sqft
Project	Architecture + Interior Design

Opposite : Terraces flow off the main living areas and lead to a private garden containing a swimming pool.
Top Left : All bedrooms enjoy balconies with pool view.
Top Right : The composition of the front façade consists of two white elongated boxes shifted against each other.
Bottom Right : The use of simple line and geometry form is the best expression of this house.

Large sliding glass doors open fully to dissolve the boundary between interior and exterior spaces. Terraces flow off the main living areas and lead to a private garden containing a swimming pool and water feature.

The living areas within the house are restrained and minimal. The entire ground floor is open and inter-connected yet does not feel stark or sterile. The kitchen is carefully detailed with a functional cooking area concealed in a separate annex, allowing the occupants to enjoy the primary space without clutter.

This is a building that celebrates its location and compliments the site context and surrounding landscape, yet still provides a comfortable retreat away from a very busy urban environment. The use of simple line and geometry form is distinctive of our studio and find its best expression in Cho House.



ALE HOUSE

SEAPARK, MALAYSIA

2019 - PRESENT (ON-GOING)

ALE HOUSE

Location	Seapark, Malaysia
Type	Private Residential
Size	6,560 sqft
Project	Architecture + Interior Design

Opposite : ALE House is composed by timber and sandstone to create surfaces and textures that evoke a sense of timelessness.

Bottom : Glossy black marble treads paired with white marble risers are fixed on a gold shimmering stringer to arose the elegance of the space.

ALE House is a six-bedroom residential home located in Seapark, Selangor. The brief was given to tear down existing old bungalow and build a new two and a half storey house. The house is composed into a cubistic volume that lead through the house. We used timber and locally sourced sandstone to create surfaces and tectures that evoke a sense of timelessness, firmness and reference to vernacular modern contemporary building culture.

The materiality is sophisticated and elegant – burnished gold trimming, stone flooring and dark timbers delivering a rich and tactile experience. The staircase marked a subtle separation allowing the upper level to “float” freely over the lower.

ALE House meets all the needs of this vibrant family, and while the house ticks the boxes for the fundamentals of sustainable living, it also has a warmth of materiality, connection to the context that evokes a positive response from its occupants that will be enjoyed for many years to come.





SOO HOUSE

CHERAS, KUALA LUMPUR, MALAYSIA

2016 - COMPLETED



SOO HOUSE

Location	Cheras, Kuala Lumpur, Malaysia
Type	Private Residential
Size	5,200 sqft
Project	Architecture + Interior Design

Opposite : A strong and concrete exterior to stand against the neighbouring 80's architecture.

Top Left : TV cabinetry providing the unobstructed flow from living room to dry kitchen.

Top Right : The contrast between White Volakas Marble and warm oak dining table.

Bottom Left : Simple, clean, and efficient lines with oak tones at kitchen.

A bold yet minimal residence in Cheras. The geometric layout and sharp edges of block walls and roofs, accented with random vertical apertures, stand against the neighbouring 80's architecture.

From its strong and concrete exterior, SOO House evolved into a haven of warmth interior spaces. Light, airy, and bright, the interior space boasts of a streamlined plan that maximized functionality and multi-dimensionality of spatial use. The open plan on the ground floor provided an unobstructed flow of multiple activities within the household. Simple, clean, and efficient lines are balanced with warm oak tones. This delicate balance is best exemplified by the contrast between the light-coloured tiles and the wooden wall paneling, as well as the streamlined open-stringer staircase made out of solid oak planks. These elements in the interior space are in harmony with the house's exterior, providing a continuity in its design and planning.

TAD HOUSE

DAMANSARA HEIGHTS, KUALA LUMPUR, MALAYSIA

2019 - PRESENT (ON-GOING)



TAD HOUSE

Location	Seapark, Malaysia
Type	Private Residential
Size	8,260 sqft
Project	Architecture + Interior Design

Opposite : Tad house characterised with its minimalist-looking and clear horizontal façade lines contracting with the patterned floors at the porch.

Top : Total transform from a swimming pool to a timber yogo deck at back yard.

Bottom : Gazebo was carefully placed next to the new yogo decking to enjoy the surroundings, and reserved forest at the back of the house.

This house is our "MCO's baby" as the construction was started last year and completed in first quarter of 2021. Minimalism has shaped architecture for over a century. Embracing simple compositions and rejecting ornament, the modernist movement grounded minimalist architecture through rational use and function, and this is what we had received from client's briefs.

We totally tore down the old facade and returned to minimalism as it works with glass, steel, wooden panels ceiling and concrete surface. The solid-looking and clear horizontal facade lines can be seen from the main street appear impressive.

Ultimately, this new house adapted to enjoy the surroundings, the views, the morning sun... nothing more, nothing less.





YAP HOUSE

BANDAR MANJALARA, KUALA LUMPUR, MALAYSIA

2015 - COMPLETED



YAP HOUSE

Location	Seapark, Malaysia
Type	Private Residential
Size	6,730 sqft
Project	Architecture + Interior Design

Opposite : A simple modern compositions shaped house comprises of two colour tones, clean white and grooved lines beige brown.

Top : Openings of the house were minimized to ensure occupant's privacy.

Bottom : Balconies were introduced overlooking to the garden to offer void segments of the house.

The current house is a 3-storey corner house built In the 2010s at an intersection of Manjalara district. We aimed to build a place where architecture and humans are integrated into this atmosphere. Hence, we came up with an architectural renovation with simple compositions shapes.

The large surface covering the exterior acts as a protective boundary to ensure the occupant's privacy (as it is placed at the intersection point). The balconies become less solid due to adaptation of visual methods that allow light and sound to go through. Residents are always able to maintain the relationship between inside and outside of the house by the openness of these boundary sections and thus, identify the house's appearance.



CYC HOUSE

CHERAS, KUALA LUMPUR, MALAYSIA

2018 - COMPLETED



CYC HOUSE

Location	Cheras, KL, Malaysia
Type	Private Residential
Size	5,840 sqft
Project	Architecture + Interior Design

Opposite : A resort-like tropical house for a family who treasure togetherness.
Top : This calming haven not only does it showcase Zen elements, it also follows the owners' wish of having a serene space in the middle of the city.
Bottom : Thanks to the open spaces, a lush outdoor area, and areas that seem to invite everyone to take a rest.

This house is located in a peaceful leafy suburb of Cheras. The brief was to design a resort-like tropical house for a family who treasure togetherness, privacy, security and ease of maintenance above anything else. The "T" shaped floor plan enabled the residents to use the privacy courtyard space as it is covered by the longitude of front building facade.

The circulation and living spaces all look into the courtyard and provide the families with the visual connectivity that they desired. A rock wall shields the house from street view and a large flying angular concrete roof canopy dramatically greets visitors.





DIO HOUSE

KL SENTRAL, MALAYSIA

2020 - COMPLETED



DIO HOUSE

Location	KL Sentral, Malaysia
Type	Private Residential
Size	2,800 sqft
Project	Interior Design

Opposite : Uninterrupted breathtaking KL city skyline vista from the living and dining room.

Top : Bathrooms with stone walls and floors add texture, color, and pattern with a modern rustic appeal that is very natural yet luxurious at the same time.

Bottom : Guest is welcomed at the private lift lobby and foyer with beautifully crafted wooden wall and Volakas marble stone featured wall.

This home in KL Sentral is designed to respond to its context and to maximize the great KL city skyline view.

Access to the front door is past a beautifully crafted wooden wall and flanked with white Volakas marble stone, offering the visitor a robust elegant material pallet prior to the panorama KL city view beyond. Next, visitor is greeted by a full length hanging mirror at dining room that reflects another side of KL City view - a reserved forest, to instil a sense of nature of the environment to surround the living spaces.

This home belongs to a wonderful couple from Hong Kong. They showed us of their family font memory on a red wall in their current Hong Kong's house. Hence, we decided to bring that memory back into the heart of this new home, with the same set up and colour.

The intention was to design spatial harmony with consideration of family traditions, the surrounding vistas, and contemporary lifestyle.





PEY HOUSE

DAMANSARA PERDANA, MALAYSIA

2020 - PRESENT (ON-GOING)

PEY HOUSE

Location Damansara Perdana, Malaysia
Type Private Residential
Size 5,760 sqft
Project Architecture + Interior Design

Opposite : Even a corner can become a proper entry foyer, we want to create a moment by the front door where you could pause, sit down, and admire.
Top : The interiors follow neutral colours, only allow the loose items to contract.
Bottom Left : We promote beach inspiring mood by using pearl white colours to marry with oak wooden floor.
Bottom Right : Stone finish is applied throughout the master bath to achieve diverse architectural and aesthetic effects.

This house is located beside a reserved forest. The project intention was to create a well function house but also a space to enjoy and appreciate the outside view. The sensation of open spaces connected reading area, grand piano, dining, and outdoor water feature is established by two sets of wide sliding doors. There are no high elements which also contributes to a fluid indoor-outdoor perception.

The interior design follows neutral colours. White stone flooring creates a contrast to the wainscoting wall panels, which continue its appearance towards kitchen. At the bedrooms there are a beach inspiring mood, using neutral colours to marry with wood flooring details. At the daughter's room, we designed a ludic space using a pinkish palette. In addition to the functional layout of the rooms, a lot of attention was put on the choice of materials and colours in which we wanted to express our client's simplicity and at the same time a touch of sophistication.



BOS HOUSE

BUKIT JALIL, MALAYSIA

2021 - COMPLETED

BOS HOUSE

Location Bukit Jalil, Malaysia
Type Private Residential
Size 1,400 sqft
Project Interior Design

Opposite : A daring contract mood between modern greyish blue furniture and overall Muji style ambiance at living room.
Top : A classical MUJI style loft as soon as you set foot in Bos house.
Bottom : A simple master bedroom that is made and contrasted by merely 2 materials and 2 colours: white and maple.



Japanese design brand MUJI has taken a bold step into architectural and Interior design territory in Malaysia. We have been given the brief to design a house with MUJI style.

The Muji Style has a signature look wherein less is considered more. However, if you think that Muji is only about minimalism, then you are entirely wrong. The idea of Muji is about having good quality and well-crafted furniture that will enhance the true essence of Zen Living. That's how we embody the entire home with the functional elegance of MUJI's minimalist design aesthetic, and it is made and contrasted by merely 2 materials and 2 colours: white and maple.

The essences of MUJI's philosophy is in a good position to make the world see the beauty in buildings that work well, have a simplicity that can be interpreted as an aesthetic.





HEALTHCARE

"We want to design a hospital that does not look like a typical hospital. It should exude confidence in users as a place of science and precision in healthcare facilities. Our direction to create a functional high-tech appearance aims to impart a sense of confidence in the healing technology."

– FDCV GROUP SDN BHD

COLUMBIA ASIA CHERAS HOSPITAL

CHERAS, MALAYSIA

2010 - COMPLETED

COLUMBIA ASIA CHERAS HOSPITAL

Location	Cheras, Malaysia
Type	Healthcare
Land Size	3.45 acre
Total Units	82 Bedded
Project	Architecture + Interior Design

Opposite : This hospital uses curtain wall to maximize natural daylight, the cladding uses bright silver composite aluminium panels and blue tinted glass to give a modern look.

Top : Graphical carpet tile was applied at OPD area to contrast the surroundings clinical look corridor, also acting as the sound absorbent.
Bottom : Birch Wood bedhead at wards takes on a softer approach whilst maintaining a homely feel.

The brief asked for a hospital that does not look like a typical hospital. It should exude confidence in users as a place of science and precision in healthcare facilities. Unlike most of the conventional local hospitals that try to create vernacular or tropical architectural language, this hospital makes no attempt to follow the old paradigm hospital design in the region. It uses curtain wall to maximize natural daylight. Visually pleasing in proportion, the cladding uses was a bright silver composite aluminum panels and blue tinted glass to give a modern look with a clean sleek image. This functional high-tech appearance aims to impart a sense of confidence in the healing technology.

The interior design of the hospital, on the other hand, takes on a softer approach whilst maintaining a homely feel. Again, the aesthetics are achieved by the appropriate use of intricate detailing in the joinery works. Natural lighting is therapeutic and here it is abundant in the wards as well as the common areas in the building.



The design took the shape of an efficient rectangular shape, where generally the first floor is for the patient care. All the patient rooms are placed here along the perimeter with external windows for filtered daylight, and possible natural ventilation in case of power failure. Ground floor is dedicated to diagnostic, treatment and administrative functions. All supporting services and back of house functions occupy the only basement level. All the mechanical plants and water tanks are planned to centralize entirely on the covered roof level, which forms the mass necessarily for the required façade proportion consideration. This enclosed roof level becomes an interstitial space insulating the habitable floor below, as such reducing vertical heat load, which is predominant in tropical climate. By so doing, all habitable floors are also free of mechanical rooms, therefore reducing heat, noise and contamination risk.

A health facility with 82 beds, a full range of primary and secondary services, including inpatient and outpatient care, a 24-hour emergency room, day surgery and physiotherapy, three modern operating theatres, medical laboratory, an endoscopic unit with the support of ambulatory services and computerised operating systems.

* Project was partly managed by FDCV Group.



COLUMBIA ASIA SEREMBAN HOSPITAL

SEREMBAN, NEGERI SEMBILAN, MALAYSIA

2010 - COMPLETED



COLUMBIA ASIA SEREMBAN HOSPITAL

Location	Seremban, Negeri Sembilan, Malaysia
Type	Healthcare
Land Size	1.60 acre
Total Units	40 bedded
Project	Architecture + Interior Design

Opposite : Central Inner courtyard was introduced to vitalise the hospital compound.

Top : Pick-up and drop-off zone: guests are welcomed with a thoughtful landscape garden and overwhelmed aluminium composite panel clad porte-cochere.

Bottom : Columbia Asia Seremban managed to secure the land across the public road for extension as well as to build a bridge to link the new and old buildings.

12 years after completion of the Columbia Asia Seremban medical centre, the client managed to secure the land across the public road for extension as well as the permit from the local authority to build a bridge across to link both buildings. The extension involves building a new 40 bedded medical centre. Although the two buildings were built some 12 years apart, by introducing new architectural features to the new, the new block to complement the older building and yet individually distinctive.

The interior design of the hospital, on the other hand, takes on a softer approach whilst maintaining a homely feel. Again, the aesthetics are achieved by the appropriate use of intricate detailing in the joinery works. Natural lighting is therapeutic and here it is abundant in the wards as well as the common areas in the building.

* Project was partly managed by FDCV Group. * Project by Environmental Design Practice.



COLUMBIA ASIA SETAPAK HOSPITAL

SETAPAK, KUALA LUMPUR, MALAYSIA

2011 - COMPLETED



COLUMBIA ASIA SETAPAK HOSPITAL

Location	Setapak, Kuala Lumpur, Malaysia
Type	Healthcare
Land Size	1.20 acre
Total Units	87 bedded
Project	Architecture + Interior Design

Opposite : This functional high-tech blue tinted curtain walling appearance aims to impart a sense of confidence in the healing technology.

Top : The interior is a neutral hue of background white with accent colours highlighting nurse station.

Bottom Left: Clean and sleek look at operational theatre room.

Bottom Right : Single bedded ward design follows neutral colours with wooden floor and bedhead, Columbia Asia corporate colour, turquoise creates a contrast in upholstery.

Based on the prototype hospital design as developed for the Columbia Asia Cheras Hospital, the Columbia Asia Setapak Hospital adopts a functional, modern appearance for its 90-bedded community hospital. The design of this medical facility oozes a precision, functionality and sleekness, to impart a sense of confidence in the healing technology.

The interior is a neutral hue of background white with accent colours in certain areas. The interior ambiance is fresh and therapeutic yet hygienic. The interior benefits from abundant natural lighting. The intensity of light is controlled and filtered by architectural planes of different materials, textures, and colours. When light passes through or is reflected from these planes, different light qualities are produced as required for specific areas.

* Project was partly managed by FDCV Group.

* Project by Environmental Design Practice.

COLUMBIA ASIA MEDAN HOSPITAL

MEDAN, INDONESIA

2012 - COMPLETED



COLUMBIA ASIA MEDAN HOSPITAL

Location	Medan, Indonesia
Type	Healthcare
Land Size	12,065m ²
Total Units	227 bedded
Project	Architecture + Interior Design

Opposite : Rumah Sakit Columbia Asia Medan, a hospital that operates 227 beds and 49 outpatient clinics to serve the needs of the best medical services in Medan.

Top : A total façade transformation from existing old structure with annexes of shimmering aluminium panels and white external coating.

Bottom : The creation of an easily recognizable iconic architecture for Columbia Asia Hospital at Medan.

We were given the brief to refurbish existing old hospital and transform it become "iconic" architecture of Columbia Asia Hospital. The structural element employed was relatively simple, it derived elegance of the building from the intricate language of detailing works. The approach was to create balance between satisfying the complex functional requirements of an efficient compact hospital and the creation of an easily recognizable and "iconic" architecture for Columbia Asia Hospital.

The interior is a neutral hue of background white with accent colours in certain areas. The interior ambiance is fresh and therapeutic yet hygienic. The interior benefits from abundant natural lighting. The intensity of light is controlled and filtered by architectural planes of different materials, textures, and colours. When light passes through or is reflected from these planes, different light qualities are produced as required for specific areas.

* Project was partly managed by FDCV Group.

* Project by Environmental Design Practice.





COLUMBIA ASIA CHERAS HOSPITAL EXTENSION

Location	Cheras, Malaysia
Type	Healthcare
Land Size	2.40 acre
Total Units	98 bedded
Project	Architecture + Interior Design

Top : Columbia Asia first attempt to build a multistorey hospital, the expansion block is almost double sized of the existing hospital.

Bottom : The design took the shape of an efficient rectangular shape to complement the older building architecturally and yet individually distinctive.

8 years after completion of the Columbia Asia Cheras Hospital, the client managed to secure the adjacent land for extension as well as the permit from the local authority to build a bridge across to link both buildings. The extension involves building a new 100 bedded Hospital. Although the two buildings were built some 8 years apart, the challenge is to complement the older building architecturally and yet individually distinctive.

The interior design of the hospital, on the other hand, takes on a softer approach whilst maintaining a homely feel. Again, the aesthetics are achieved by the appropriate use of intricate detailing in the joinery works. Natural lighting is therapeutic and here it is abundant in the wards as well as the common areas in the building.

The design took the shape of an efficient rectangular shape, where generally the first, second, and third floors are for the patient care. All the patient rooms are placed here along the perimeter with external windows for filtered daylight, and possible natural ventilation in case of power failure. Ground floor is dedicated to diagnostic, treatment and administrative functions. All supporting services and back of house functions occupy the basement levels. All the mechanical plants and water tanks are planned to centralize entirely on the covered roof level, which forms the mass necessarily for the required façade proportion consideration. This enclosed roof level becomes an interstitial space insulating the habitable floor below, as such reducing vertical heat load, which is predominant in tropical climate. By so doing, all habitable floors are also free of mechanical rooms, therefore reducing heat, noise and contamination risk.

COLUMBIA ASIA CHERAS HOSPITAL EXTENSION

CHERAS, MALAYSIA

2018 - PRESENT (ON-GOING)





KLIDC DENTAL CLINIC

BANGSAR, MALAYSIA

2021 - PRESENT (ON-GOING)

KLIDC DENTAL CLINIC

Location	Medan, Indonesia
Type	Healthcare
Land Size	12,065m ²
Total Units	227 bedded
Project	Architecture + Interior Design

Opposite : Bright white base interiors contrasting with gold trimming enrich the clinic sterile identity and impart a sense of elegance.
Top : Fully equipped dental consultation room overlooking to the Bangsar commercial district.
Bottom : The curved corridor add more depth and softness to the space so that patients can wander around and entertain their eyes.



The project consists of the adaptation of a commercial premises in the heart of Bangsar city. A set of fishbowl of different sizes and transparent material colonize the area. The rooms are directed by a curvy corridor to create a sense of openness so that the patients can wander around and entertain their eyes. The internal space in which the rounds overlap will be defined vaguely, limiting straight lines and placing curves inside the tight space maximize esthetic. The curves add more depth and softness to the space which somehow brings the sense of continuity and visually emphasizes the interior.

Bright white base with contrast gold trimming is implemented into the entire interior. It is to create a wide ambiance that enrich the clinics sterile identity. Light colours, curved shapes and indirect lighting which goes through all the areas, convey the sensation of calm and balance both for patients and medical staff.

In addition to the waiting area on the main entrance axis, the dental health clinic has also carried the waiting function to the hallways with various lounge area designs. The efficient circulation helps the medical staff not to get tired even after a long period of work.

This clinic, in continuity, generate a space that speaks of transparency, hygiene, precision and professionalism.



HOTEL

"The goal is to elevate the hotel to an area of high comfort and hospitality. We want to design a hotel where visitors will let their heart wander, let the mind travel and discover the awe-inspiring space."

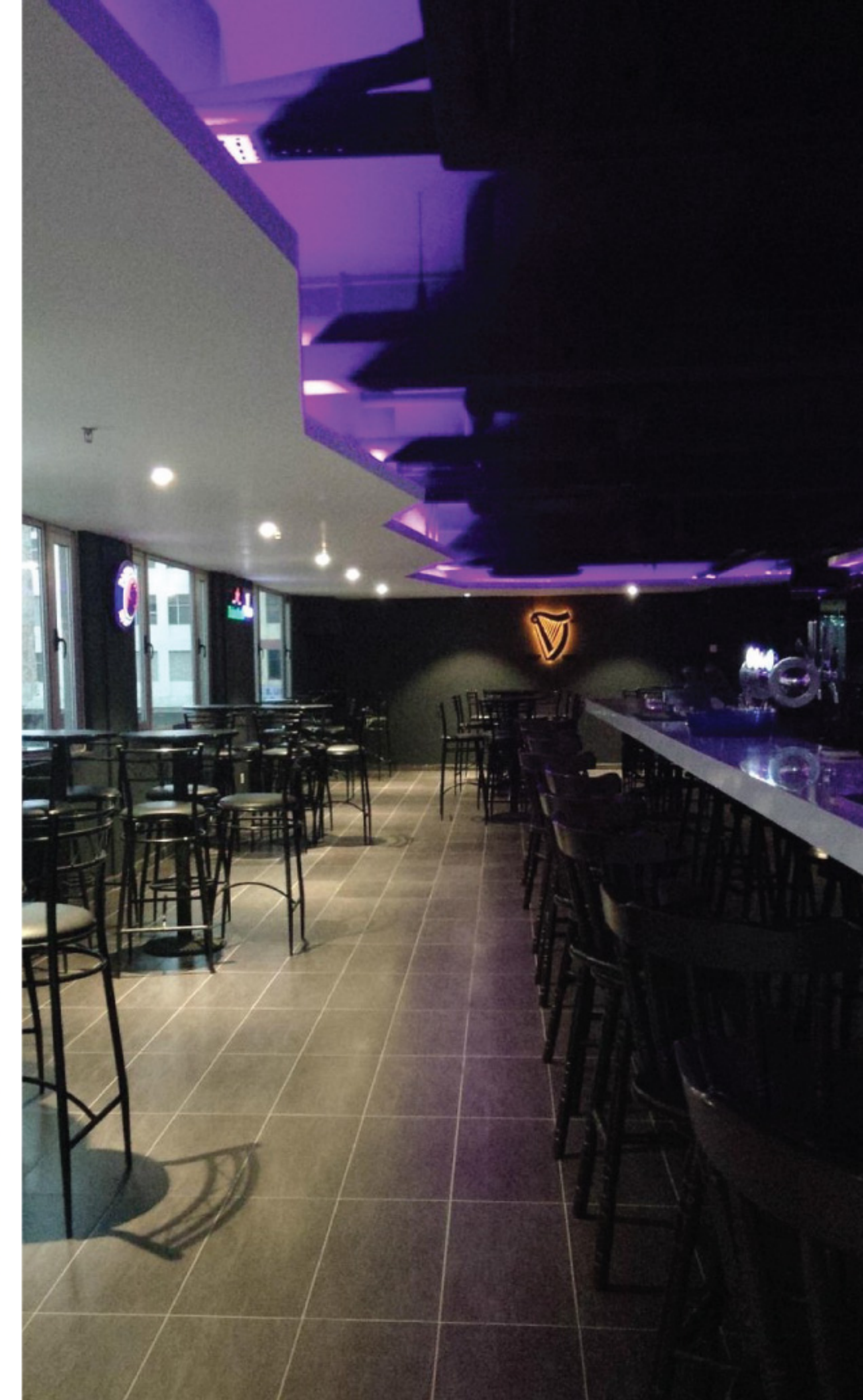
– FDCV GROUP SDN BHD



EXCELSIOR HOTEL

IPOH, PERAK, MALAYSIA

2015 - COMPLETED



EXCELSIOR HOTEL

Location Ipoh, Perak, Malaysia

Type Hotel

Total Units 178 rooms

Project Interior Design

Opposite : This fourteen storey building deeply embodies the nostalgic charm of 70's architecture with present design touch.

Top Left : Deluxe room: modern and homely concept is introduced throughout 178 rooms.

Bottom Left : All day dining restaurant: Buffet island is situated at the heart of the restaurant with combination of modern white solid surface and oak wood lamination.

Right : The corrugated ceiling and purple LED lining design made with attention and mysterious in the first floor bar lounge.

A heritage design hotel in the heart of Ipoh city that is close to the city's commercial and business hubs as well as its main pleasure and F&B attractions. The essence of the architectural is inspired by the existing heritage ornaments and fins, and exquisite blend of inheritance detailings and contemporary finishes and colours. This fourteen-storey building deeply embodies the nostalgic charm of 70's period architecture with present design touch.

Period furniture and chandelier and graceful interior design with contemporary motif in the lobby enhance a feeling of elegance. Meanwhile, the hotels' stylish yet tranquil environment complimented by resort-like finishes and touches, including stone paint finish, captures a true sense of relaxation.

H BOUTIQUE HOTEL

SRI PETALING, MALAYSIA

2016 - COMPLETED



H BOUTIQUE HOTEL

Location Sri Petaling, Malaysia

Type Hotel

Total Units 26 rooms

Project Interior Design

Opposite : H Boutique Hotel is located at the busy Sri Petaling commercial district, sandstone cladding is used to stand out among others.

Top : Hotel Reception: We opt for exciting blend of tasteful Victorian style and retro fittings to enlighten the mood.

Bottom : The interior of the bedroom is taking in the artistic culture of the Victorian days.

H Boutique Hotel is located just 20 minutes away from Kuala Lumpur City centre. We want to design a space where visitors would let their heart wander, let the mind travel and discover the existing and awe-inspiring hotel.

We opt for an exciting blend of tasteful Victorian style with retro fittings. Seven types of rooms were designed and fitted for different needs. When style and tradition blends stirringly and harmoniously with one another, the interior is taking in the artistic culture of the Victorian days.





D'WHARF RESIDENCE

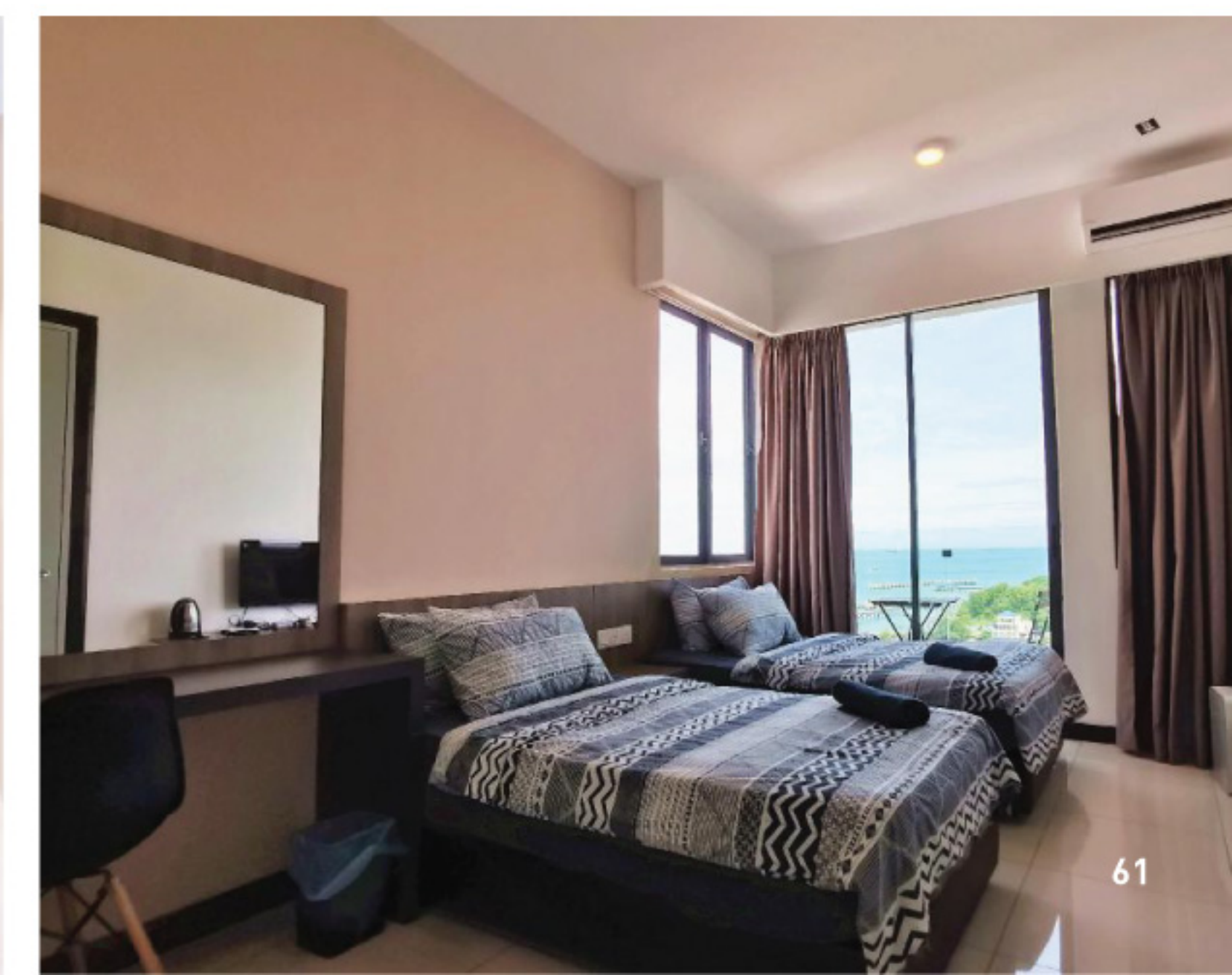
Location	Port Dickson, Negeri Sembilan, Malaysia
Type	Hotel
Total Units	308 rooms
Project	Interior Design

Opposite : D'Wharf Hotel & Services Residence is strategically located in the heart of Port Dickson with unobstructed sea view over the Straits of Malacca.
Top : Pivoting timber veneer TV cabinetry is carefully placed to serve both bed and living areas to soften the tone and mood of the unit.
Bottom Left : Hues of grey, earthy tones were used at walls to promote visual neutrality.
Bottom Right : We want to achieve "home away from home" moments for the guests.

D'Wharf Residence is a new built Contemporary styled Serviced Residence / Hotel situated at the newly developed Port Dickson waterfront area. Consisting of 308 fully furnished units over the straits of Malacca.

Working together with the client, Architect and other consultants, we proposed a simple, understated, elegant design language, with a limited pallet of colour and materials to minimize wastage and have a streamlined design style throughout the building. Hues of Gray, earthy tones were used at walls to promote visual neutrality, with emphasis placed on certain elements of the units by wrapping it with timber veneers, as well as placing diffused lightings and backlights to soften the tone and mood of the units.

The goal was to elevate the hotel to an area of high comfort and hospitality. The design is kept simple that dictate the functionality of the spaces. The game of natural light, the unobstructed view to sea vista, carefully placement of TV and resting areas are key elements taken into consideration in the design. The unobstructed view of the straits of Malacca is captivating.



D'WHARF RESIDENCE

PORT DICKSON, NEGERI SEMBILAN, MALAYSIA

2017 - COMPLETED



WEIL HOTEL

Location	Ipoh, Perak, Malaysia
Type	Hotel
Total Units	313 rooms
Project	Interior Design

Opposite : Weil hotel is more than just a hotel, interiors are essential to provide seamless experience the minute when guest step into the building.
Top : President suite rests on the top floor of WEIL hotel overlooking Ipoh's beautiful skyline.
Bottom Left : Function hall is hanging a distinguished black ceiling with customised dome lightings.
Bottom Right : Inspired by the rich histories of Ipoh and featured a built-in Jacuzzi to ensure the guests enjoy a stay like no other.

Weil hotel is an independent bespoke luxury hotel that best portrays the natural urban beauty of Ipoh's historic core. It welcomes the urbane traveler to a contemporized experience.

We are given the brief to design their president suite room and function hall. Urban contemporary is the key element of the design concept. We introduced elements of visual trickery and surprise, notions of voyeurism and illusions, with the end goal of creating delightful spaces and memorable guest experiences. This element of visual trickery is subtly introduced, ranging from customized carpet floor patterns, furniture design, and appearing & disappearing glass panels in toilet that open to reveal pantry and bed space. This interior capable of differentiating similar spaces from one another, in an interesting relation of the unit variants, giving diversity in the modulation.



SALES GALLERY

"We are creating a holistic experience and offering a fresh take on modern lifestyle sales gallery. Its main purpose is to attract the potential buyers once stepped into the building."

– FDCV GROUP SDN BHD

VISION CITY SALES GALLERY

NILAI, MALAYSIA

2016 - COMPLETED



VISION CITY

Location Nilai, Malaysia

Type Sales Gallery

Land Size 0.89 acre

Project Interior Design

Opposite : One of the three mock-up unit by implementing modern European concept with wainscotting and Volakas marble touches.

Left : An accomplish task to fit in dry kitchen and dining table in a limited space.

Top Right : Imported waterproof timber vein wall panels at toilet.

Bottom Right : Bed head design with wainscotting linings and two contrasting colours become the focal point that change the vibe of the room instantly.

Vision City sales gallery is a new modern design sales gallery for one of the most recent condominium called Youth City Residence, which located at Nilai, Malaysia. We got a commission to design the gallery, which contains a reception lobby, mock up units, model display area, cafeteria, meeting spaces, and staff offices.

Vision City sales gallery reflects the main development's clean and modern form for the art of living. The gallery is designed for exhibition space and work space, as well as 3 typical fully furnished units. The gallery spans over two levels connected by a timber finish staircase. Due to the high ceiling at ground floor, we proposed several lighted circular shaped stretched membrane ceiling in random sizes, over shining to the 3D physical models and exhibition spaces. Its main purpose is to attract the potential buyers once stepped into the building.

Inside the main lobby space, space is clad by the book match white marble stones as the backdrop of reception counter. Passing by though this lobby, the visitors arrive at the mock up unit show suites. The gallery's second floor houses the meeting room, and staff offices. Just as the rest of the building's interiors, the show suites are fully designed and styled by FDCV Group team, creating a holistic experience and offering a fresh take on modern-contemporary lifestyle.



RESIDENSI LILI SHOW ROOM

NILAI, MALAYSIA

2021 - COMPLETED



RESIDENSI LILI SHOW ROOM

Location Nilai, Malaysia

Type Sales Gallery

Land Size 0.89 acre

Project Interior Design

Opposite : Lift lobby is greeted with natural grey travertines panelling matches the herringbone pattern timber tiles.

Top : We add a little bit more of patterns and colours pop against the white ceiling and plain flooring.

Bottom : For the living room, customized graphical wallpaper come together to create a fun and simple statement for young crowd.



Completed in 2021, our latest project – Residensi Lili Show Room, another great team work by our interior design team, nestled at a tranquil and serene terrain, Green Beverly Hill, Nilai.

We are commissioned to complete 2 units of show room. For the client, the interior set up was essential to attract young couple market. From this guideline we build the idea around two concepts: combination of different tone and timber patterns; another one with daring colours and playful geometry forms. The selected wall featured material was customized wallpaper, generating contrasts and harmonizing the space, it generates visual and material continuity between rooms to rooms.





WORKPLACE

"We always believe, one of the important aspect that influences employee motivation and happiness, and how productive and efficient they can be, all goes down to the working environment."

- FDCV GROUP SDN BHD

FDCV GROUP WORKPLACE

KOTA DAMANSARA, MALAYSIA

2014 - COMPLETED



FDCV GROUP WORKPLACE

Location	Kota Damansara, Malaysia
Type	Workplace
Size	12,000 sqft
Project	Interior Design

Opposite : We want to create a rustic statement at reception, a sets of unique DIY colourful sofas, concrete and bricks combinations counter, and use of artificial grass and uneven wood board.

Top : We continue the rustic statement at our top floor conference room, the space is covered with lacquered timber table with black and wooden wine rack as backdrop.

Bottom Left : Director room 1: black steel panels and red bricks wall combined with clear industrial concept design.

Bottom Right : In the director room 2, one-of-a-kind car figurines display shelf is used for the backdrop.

Our humble office.

We transformed an old factory into a trendy workplace to house 5 companies to-date. It consists of reception, waiting zone, staff rest, pantry, warehouse, offices, meeting lounge, and entertainment room. FDCV completes a workplace consisting serviced offices and co-working spaces that allows members complete freedom to adjust their office space and duration according to their evolving needs.

Located at kota Damansara, the project is 12,000sqft over four floors, with a dedicated social floor consists of a conference table, pantry, and karaoke entertainment. The workspaces are crafted to be the most complete environment for today's workforce. Workspaces are created to deliver hospitality values and standards, ensuring members feel that coming to work is a true pleasure.

The materials finishes are coherent throughout, but subtly evolve through the different spaces. For example, timber is used as a coherent architectural finish, while artificial grass inject moments of natural patterns to boost energy.

We always believe, one of the important aspect that influences employee motivation and happiness, and how productive and efficient they can be, all goes down to the working environment.

SETARA PELANA OFFICE

SOLARIS DUTAMAS, KUALA LUMPUR, MALAYSIA

2011 - COMPLETED



SETARA PELANA OFFICE

Location	Solaris Dutamas, KL, Malaysia
Type	Workplace
Size	6,350 sqft
Project	Interior Design

Opposite : One of the “combustion” point – director room 2 with blue tinted glass door and angular shaped panels represent the element of water.
Top Left : The third “combustion” point at director room 1 in red tinted glass becomes a focal point.
Bottom Left : Meeting room is designed as one of the “combustion” point, finished in green tinted glass and carpet flooring represent the element of forestry.
Right : The blue director room has direct visual towards the main meeting and waiting areas, which clearly enables overseeing the transition from public to private space.

Arriving at the office, Setara Pelana welcomes visitors with a cosy waiting area adjacent to a small discussion room. At this point, one will be presented with a choice of going either to the left or right. To the right, it leads to the main meeting area that is one of the ‘combustion’ point , finished in green tinted glass. While to the left, one would be venturing into Setara Pelana’s main working area. The indubitable ‘combustion’ point of director’s room comprises of blue tinted glass becomes a focal point. The blue director’s room has direct visual towards the main meeting and waiting areas, which clearly enables overseeing the transition from public to private space. As we move deeper, despite having numerous angular panels diverging focal point, one have to admit the main ‘combustion’ point – the director’s room in red tinted glass is so apparent at the end. Throughout the journey, there are four curvature free standing storage units as soften agents to the overall; these units also serve as future working space expansion. The white spray painted finish to the office not only deliver subtlety to the angular panels, it also amplifies the three ‘combustion’ points which dictates the journey. The journey is a visual and physical experience subtly choreographed by the silhouettes of all these angular panels.

As conclusion, being able to translate from an intangible language of Feng Shui into a functional, practical and inspiring working space; was a great experience to everyone - ZX Atelier, the joiners and mostly the Setara Pelana(s).



The concept of this interior exercise strongly influenced by Feng Shui studies; the elements of fire, water and forestry evidently define three main colours – red, blue and green. The two main colors of red and blue represent both directors and green denotes all employees. As fire is the main element, it inspires the overall interior planning and three dimensional interior perspectives. ‘ Fire’ consists by layer of flames, and flames with irregular organic edges.

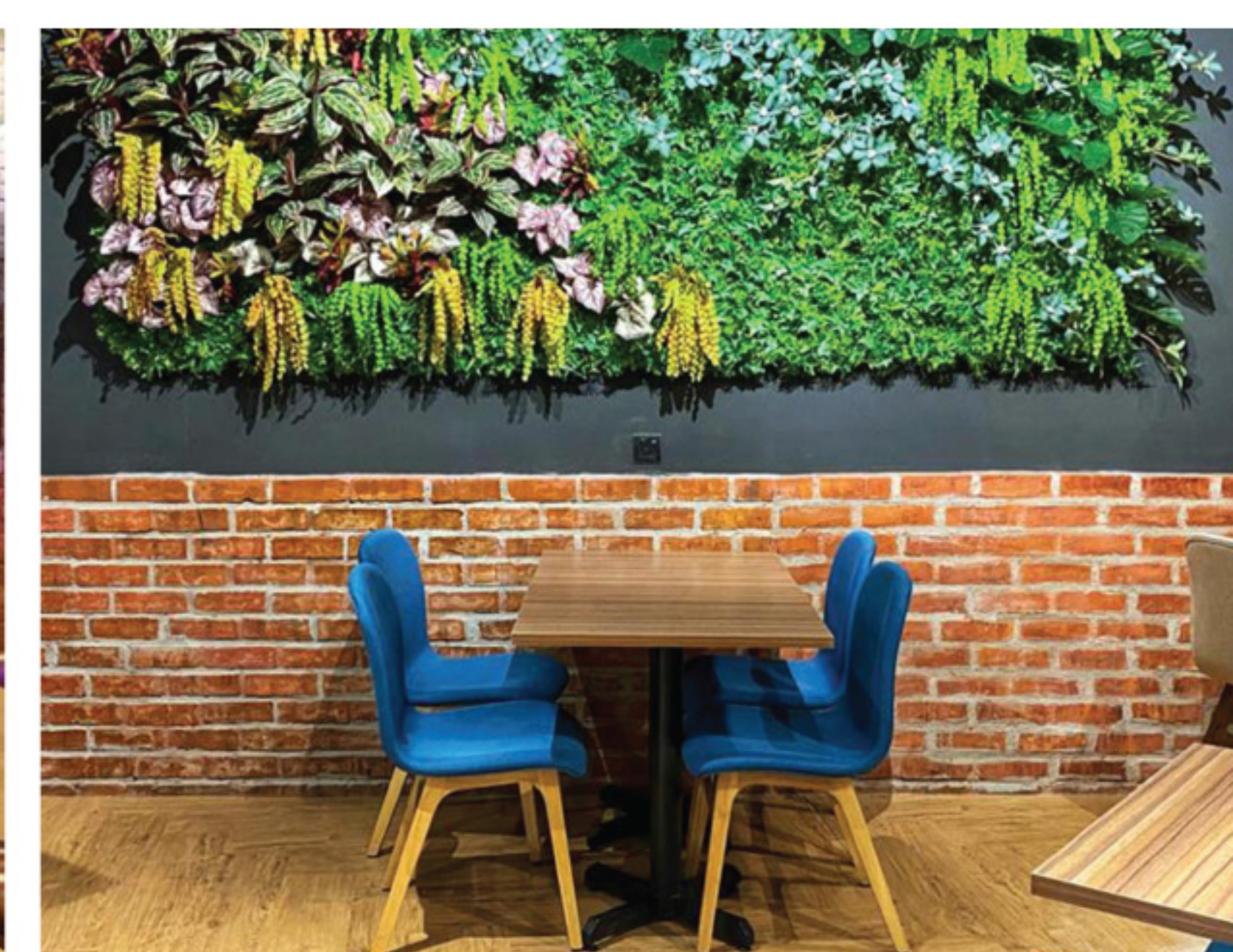
The office consist of three “combustion” points: the two directors’ rooms and meeting room which then defines other areas such as general working spaces, waiting area and storage areas. The organic edges of flame has morphed into asymmetrical angular panels that subtly separates functionality of working areas.



FOOD & BEVERAGE

"It is important for us to marry the design concept with the outlet, make the space shone better and blossomed. It should be a place of action more than for observation."

- FDCV GROUP SDN BHD



UNION ARTISAN COFFEE

Location	1MK, Kuala Lumpur, Malaysia
Type	Food & Beverage
Size	1,450 sqft
Project	Interior Design

Opposite : The brief of this project was to combine adjacent new lot with existing unit and marry the design concept with the old outlet.
Top : The space is designed to look like an industrial setting, mural paintings on red brick walls steals the spotlight as the brightest elements in the room.
Bottom Left : The "connection" that bridge the new and old.
Bottom Right : Decorative green wall backdrop that's attention-grabbing, yet natural.

The Union Artisan Coffee Cafe is unbelievably the first artisan coffee cafe at 1 Mont Kiara. The time the project brief was to combine adjacent new lot with the existing unit. It was important for us to marry the design concept with the old outlet, make the space shine better and blossomed.

The space is designed to look like an industrial setting, red bricks, floral deco and black steel. The chairs are a mix of retro like art deco chairs and modern wooden tables. The main thing in the design are the details that create a special atmosphere and comfort.

As a retail area, it's important to display a popular and busy atmosphere in side to be seen from the outside to attract more guests. Therefore, varies types of seating areas are easily approached from outside and can be visually recognized.

The design and construction supervision is accomplished mainly via online. As a result of the corona pandemic, the regular site visits are all limited. Even though there are multiple elements that postpone the construction, thanks to the clients' efforts and contractor's determinations, the construction ends up smoothly and now is already open for business.



THE BAR

EMPIRE DAMANSARA, SELANGOR, MALAYSIA

2014 - COMPLETED

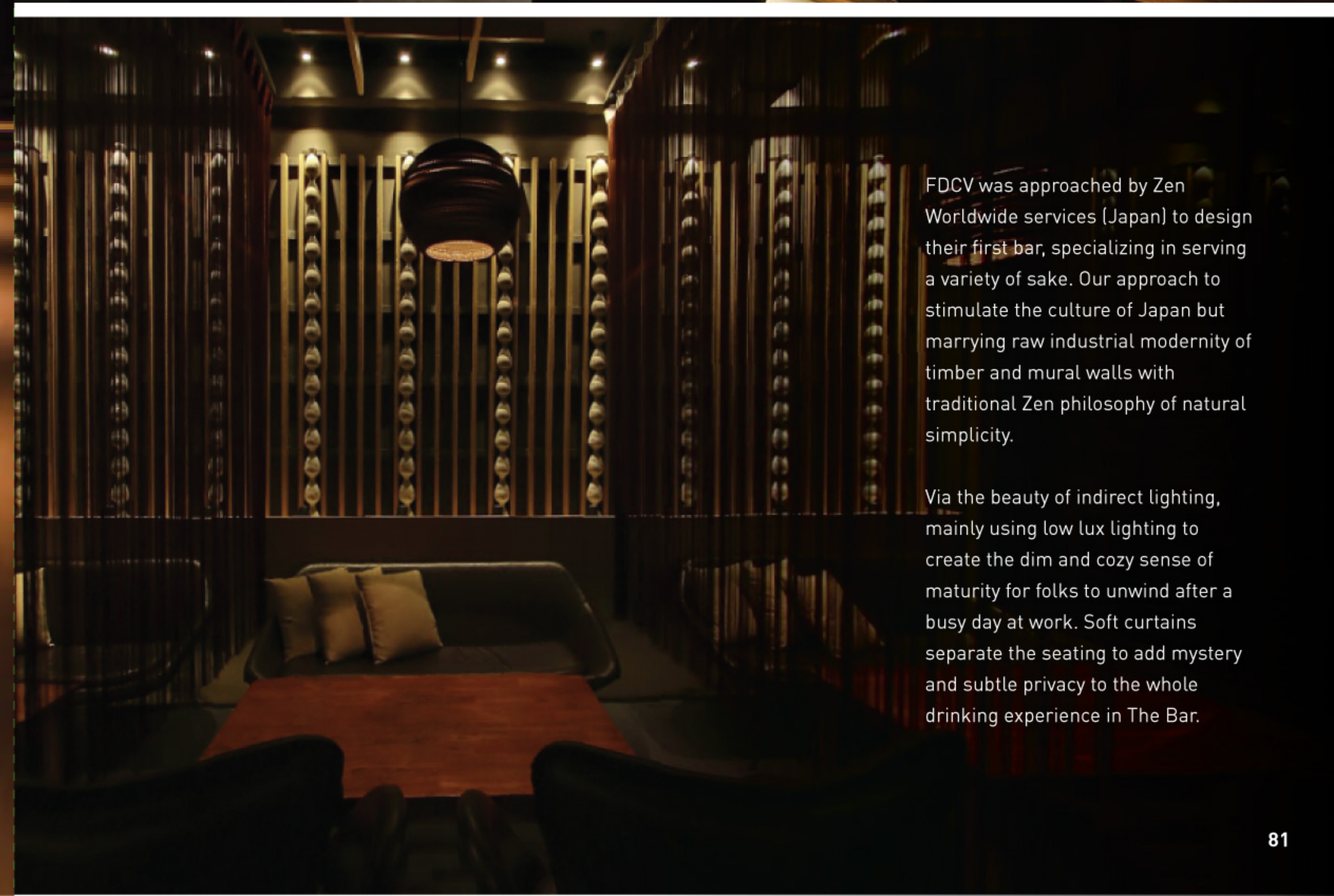
THE BAR

Location	Empire Damansara, Selangor, Malaysia
Type	Food & Beverage
Size	950 sqft
Project	Interior Design

Opposite : The main idea was to create a "Japanese" romantic atmosphere to appreciate sake and unique Japanese snacks.

Top : The beauty of indirect lighting mainly focus on working spots and the elevated platform.

Bottom : Beads string curtains separate the seating area to add privacy to the drinking experience, meanwhile enjoying a featured wall backdrop formed by traditional sake bottles.



FDCV was approached by Zen Worldwide services (Japan) to design their first bar, specializing in serving a variety of sake. Our approach to stimulate the culture of Japan but marrying raw industrial modernity of timber and mural walls with traditional Zen philosophy of natural simplicity.

Via the beauty of indirect lighting, mainly using low lux lighting to create the dim and cozy sense of maturity for folks to unwind after a busy day at work. Soft curtains separate the seating to add mystery and subtle privacy to the whole drinking experience in The Bar.

JOHNNY ROCKETS

SUNWAY PYRAMID, SELANGOR, MALAYSIA

2014 - COMPLETED



JOHNNY ROCKETS

Location	Sunway Pyramid, Selangor, Malaysia
Type	Food & Beverage
Size	6,280 sqft
Project	Interior Design

Opposite : Very retro feel and American motif stickers were put up at the entrance glass box of Johnny Rocket's restaurant to welcome all the passer-by.
Top : Red and white elements throughout the interiors bring the guests back to American golden oldies atmosphere.
Bottom : Black and white checkered floor was introduced to instil a retro and classic staple that never goes out of style.

A modern American fast food chain, one of the largest F&B outlet that we had completed to-date. We are selected as design and built team to transform a club to a pleasant dining space.

We maximize the daylight penetration for a bright and airy approach. Striking and contrasting colours were carefully picked and matched to bring out the cheerful and fun atmosphere.





QUIZNOS SUB

Location	One Utama, Selangor, Malaysia
Type	Food & Beverage
Size	800 sqft
Project	Interior Design

Opposite : The cement render wall makes the entrance simple and natural.

Top : View from the open carpark: We covered the only internal wall with hanging horizontal planters and acts as the featured wall for the outdoor seating.

Bottom : We extend the outdoor elements into indoor by proposing natural wooden and cement palette to create a feeling of "dine in garden".



Quiznos is a sandwich food outlet. The client requested for something trendy and comfortable, and we proposed for the theme of nature and a natural environment.

We wanted patrons to have a feel of dining within a garden or natural surroundings. As such we proposed a palette of natural finishes and materials, such as green walls, raw cement paint, planters and timber features. Strips of timber walls and ceilings were given to highlight the server and certain key feature to strengthen the natural feel.

QUIZNOS SUB

ONE UTAMA, SELANGOR, MALAYSIA

2014 - COMPLETED





THE LIBRARY COFFEE BAR

Location	Sunway Giza, Malaysia
Type	Food & Beverage
Size	1,250 sqft
Project	Interior Design

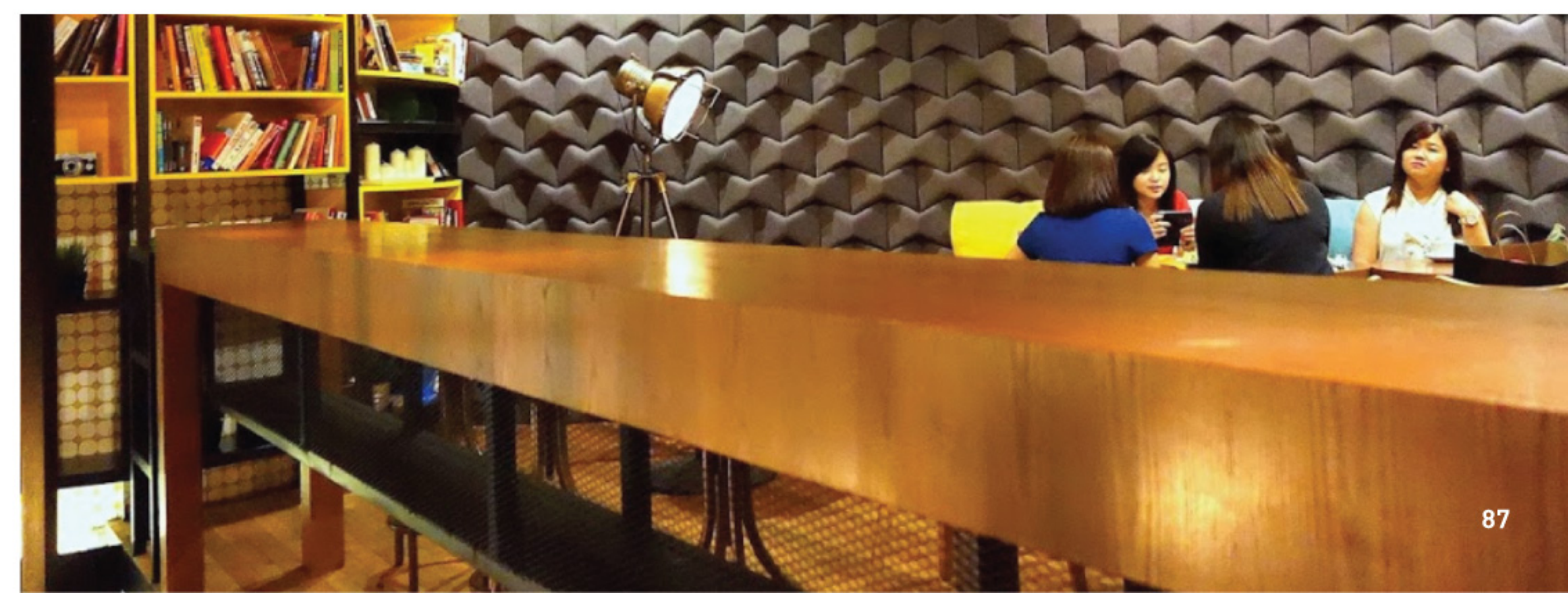
Opposite : The entrance, servicing counter and food display are designed to be closer to the public, promoting greater engagement between baristas and patron.

Top : Colourful cushions is one of the spotlight of the design to create a modern pop art mood.

Bottom : Real Physical books and shelves are placed diligently in different seating zone to provide a sense of "drink in library" concept.

"Where industrial philosophy meets modern pop art". Taking the challenge of creating a one-of-its-kind coffee car, The Library Coffee Bar interior meets exactly just that, polished concrete finish, equipped with sheet glasses and vibrant colours to create the warm and lively ambience for the teenagers and adult alike.

Where the best practices are put in play, the entrance, servicing counter and food display are designed to be closer to the public, promoting greater engagement between baristas and patron and serving efficiency. The idea was to design a space to be able to converse with the various activities to the different types of visitors. Therefore, wooden flooring, retro white tiles counter, various bulbs, colourful cushion backing should be complemented by an intense spatial relationship. From a bright and relaxed seatings to a more intimate and cozy atmosphere filled with exotic purple colour. Should be a place of action more than for observation.



THE LIBRARY COFFEE BAR

SUNWAY GIZA, MALAYSIA

2014 - COMPLETED



RETAIL

"Retail space focuses on powerful branding, a smooth and interactive consumer experience, making the space the ultimate destination for unforgettable moments of conviviality and relaxation."

- FDCV GROUP SDN BHD



IFRUITS

KLANG, SELANGOR, MALAYSIA

2021 - COMPLETED

IFRUITS

Location	Klang, Selangor, Malaysia
Type	Retail
Size	1,900 sqft
Project	Interior Design

Opposite : The line of lighting at the ceiling produce communication with patrons, dictating them in circulation sensory experience.

Below : The interior space consists of all natural and industrial look building materials like pine wood rack, black metal structures, red bricks and wooden floor.

A market is not simply an ordinary place to purchase food. It is a place where you go to seek out products that reflect the taste and feel of nature. With this in mind, our goal is to design every part of the market based on the principle of flexibility, adapting every decision to the nuanced demands of each kind of food and product.

Ifruits market is a 1,800 Square Feet space focusing on the sale of fruits, dried food and vegetable products, located in Klang.

The interior space consists of natural and industrial modern elements like pine wood racks, metal structured frames, artificial plants, hanging big iron hook, and a wooden floor. This strategy provides a common theme that unifies the entire space.



The ceiling which is composed of a grid of tubular black structure that works as a base for the lighting system. The line of lighting produce communication with people, dictating the guests to immerse themselves in circulation sensory experience, that helps to attract casual encounters among the neighbors of the area into the shopping activity.

The whole design principle forms a unique identity that resonates with the healthy lifestyle that the market promotes.

PRESTIGE WATCH SHOP

GENTING HIGHLANDS, MALAYSIA

2021 - PRESENT (ON-GOING)



PRESTIGE WATCH SHOP

Location	Genting Highland, Malaysia
Type	Retail
Size	2,100 sqft
Project	Interior Design

Opposite : Entrance and pillars along the boundary parameter were clad with black marble, offers luxury and classy statement.

Top : A large circular stretched membrane illuminated ceiling dominates the entire shop.

An imposing and extraordinary new Prestige Watch Shop is going to invade at Genting Highlands, Bentong. After one year from the completion of the outlet at Berjaya Timesquare, Kuala Lumpur, Prestige Watch managed to acquire one of the sought-after store location in Malaysia.

Designer decided to clad the series of pillars along the boundary parameter with black marble, offers luxury and classy look that Prestige Watch always equipped. Thanks to the large glass facades in between the pillars, the light transparency of the glass and the intense marble black, a symbol of absolute elegance, chase each other in a game of mutual references that moves from the outside into the heart of the store.

The store is mainly segmented into two zones- Display Foyer and VIP Lounge. The interior design is minimalist and dominated by the use of black marble in its countless shades and finishes: glossy black glass, and gold anodized aluminium strips interact with the warm and refined nuances of bronze carpet, thus creating a welcoming and sophisticated environment, suitable to host all the premium watches collections. The experience continues on the lounge: it welcomes guests in an environment with a strong contemporary feel, surmounted by a large circular stretched membrane illuminated ceiling with printed clean graphical lines and a glamorous chandelier that dominates the entire shop. The furnishings, the elegant blue lounge seats and the sinuous marble counter contribute to making the space the ultimate destination for unforgettable moments of conviviality and relaxation.

RUNNING LAB

PAVILION, KUALA LUMPUR, MALAYSIA

2017 - COMPLETED



RUNNING LAB

Location Pavilion, Kuala Lumpur, Malaysia

Type Retail

Size 1,180 sqft

Project Interior Design

Opposite : Patrons will be greeted by inspirational running footage projected onto a 2 metre tall frosted glass, which houses the essential treadmill at the entrance.

Right : Square light boxes and white sticker linear lines are visually synchronised to create a sense of movement.

Bottom Left : Shoe display is decorated with reflective metal panels to provide an eye-catching division.

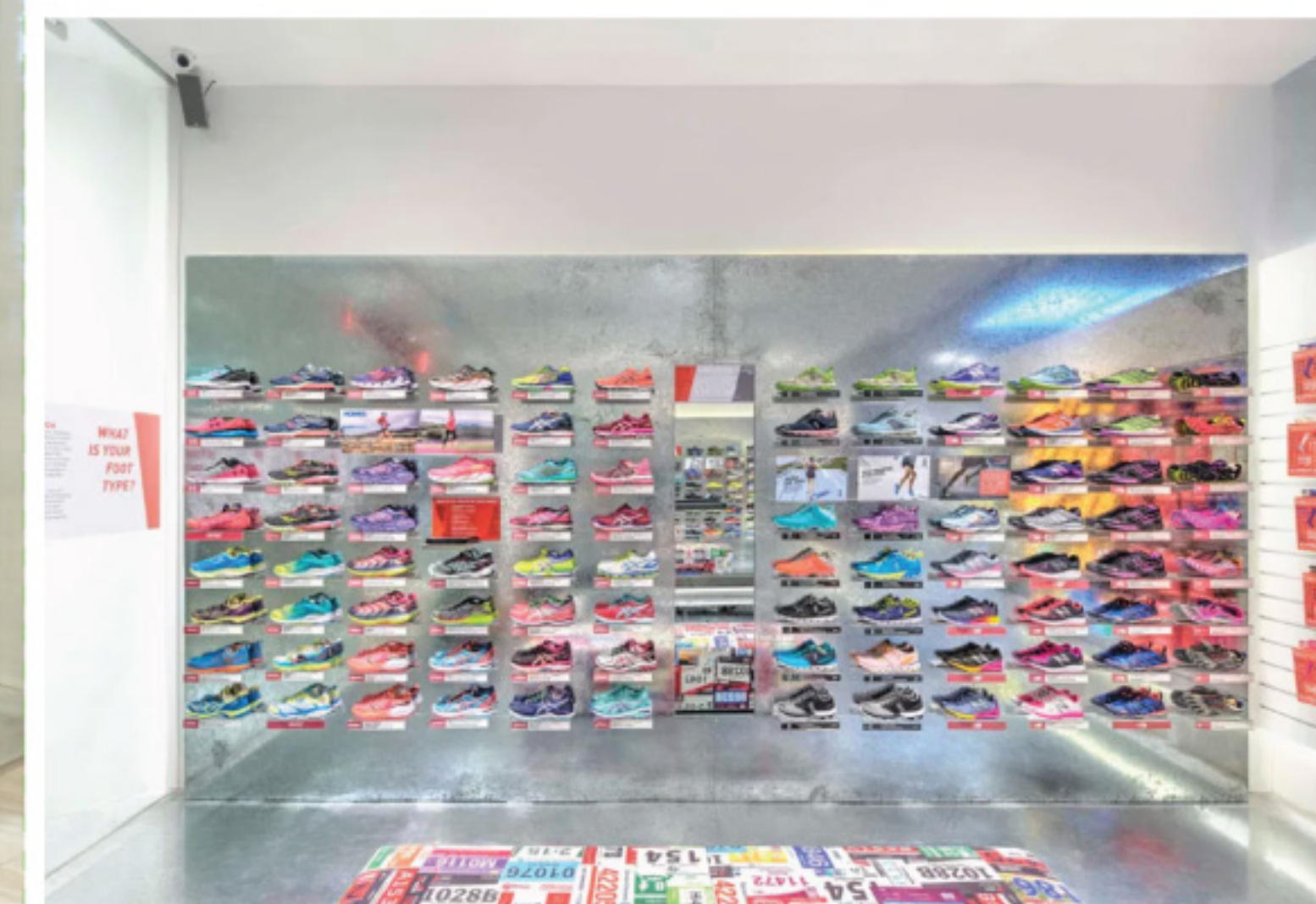
Bottom Right : The wide spectrum of materials used in this project helps create a sense of dynamics that excite the passer-by, eventually the desire to explore in the shop.

A multi-brand footwear store Running Lab is located in a modern retail mall, Pavilion KL. Passionate about running, Running Lab aim to capture the energy and sense of adventure of a runner. As a distinctive look of Running Lab stores, the visitors are welcomed by a slanted entrance. The forward slanting shapes are visually synchronised throughout each space, creating a sense of movement.



As a visitor to the stores, you also will be greeted by inspirational running footage projected onto a 2-metre tall glass frame, which houses the essential treadmill, a must-have for Running Lab's signature Gait Analysis. The two main shoe display spaces are positioned at both flanks of the shop, these units are decorated in reflective metal panels and provide an eye-catching division together with the product brands.

Overall concept stands out in the details. Concrete, metal, wall panelling, glass, tiles, wallpaper - the wide spectrum of materials used in this project helps create a sense of dynamics.





ZCOVA

Location	Kota Damansara, Selangor, Malaysia
Type	Retail
Size	2,200 sqft
Project	Interior Design

Opposite : Display stations area placed at the 4 corners and flanked with video wall to increase privacy for each set of customers.

Bottom : A solemn atmosphere was created by the fourteen feet high ceiling and decorative bronze mirror signage wall as backdrop at the hall/ waiting lounge.

Jewelry represents time and witnesses stories. In this project, we hope to convey a space that contains both the beauty and stories to the customers.

"Less distraction, more conversation" was the design intention. The first section is design for hall and display stations, and second section is consisted of pantry and office. The hall can be taken as the buffer area. A solemn atmosphere can be created due to the fourteen feet high volume ceiling with decorative bronze mirror cladding, and the tender light from the ceiling. Customers can enjoy themselves in this space without much distraction. Display stations are carefully placed at 4 corners and flanked with video wall to increase the privacy for each set of customers.

Jewelry contains story while space contains jewelry. We built a space can lead customers to hearing those moving stories.



ZCOVA

KOTA DAMANSARA, SELANGOR, MALAYSIA

2017 - COMPLETED

“I BELIEVE THAT EVERY SPATIAL EXPERIENCE IS UNIQUE, THAT COULD INTERACT WITH HUMAN, EXCITE PASSER-BY, CALM INDIVIDUAL, EVENTUALLY THE DESIRE TO EXPLORE.”

MY PHILOSOPHY ON ARCHITECTURE

The Founder **DAMON KOK YIH ZHI**

Bachelor of Environmental Design, University of Tasmania 2004
Bachelor of Architecture, University of Tasmania 2006

Damon Kok graduated from University of Tasmania in year 2006; he came back to Malaysia and began his architecture career working on large-scale healthcare and residential projects.

Damon Kok spent 4 years working in a renowned local architecture practice – Environmental Design Practice. From there he acquired healthcare planning and design skills. Due to extensive involvement in managing several large scale projects simultaneously, Damon strengthens his ability not only in managing contract administrations, he is best in clientele communication.

In August 2010, Damon Kok founded FDCV Group, an architectural & interior design practice. This practice opens up the door whereby Damon involves in direct site management with sub-contractors and becoming an amateur quantity surveyor.

Damon believes that every spatial experience is unique; trying out experimental spaces that could explore human behaviours. On design approach, he prefers elemental interaction with human; creating features that intrigues passer-by, eventually the desire to explore. As spatial experience is subjective to each individual; and hence every interior space requires different design approaches.

PROJECT EXPERIENCE

HEALTHCARE

2005-2007, Columbia Asia Hospital, Puchong, Malaysia
2007-2008, Columbia Asia Hospital, Taiping, Malaysia
2008-2009, Columbia Asia Hospital, Nusajaya, Malaysia
2009-2010, Columbia Asia Hospital, Bukit Rimau, Malaysia
2009-2010, Columbia Asia Hospital, Balakong, Malaysia
2009-2010, Columbia Asia Hospital, Seremban, Malaysia
2009-2012, Columbia Asia Hospital, Medan, Indonesia
2010-2011, Columbia Asia Hospital, Setapak, Malaysia
2019-Present, Columbia Asia Hospital, Cheras Expansion, Malaysia

PRIVATE RESIDENCE

2011-2013, Yap Residence, Menjalara, Malaysia
2013-2014, Dato' Shahidol Residence, Shah Alam, Malaysia
2014-2016, Dato' Cheong Residence, Cheras, Malaysia
2014-2016, Soon Residence, Cheras, Malaysia
2014-Present, Chin Residence, Kayangan Heights, Malaysia
2017-2018, Dato' CK Residence, Damansara Perdana, Malaysia
2019-Present, Alex Residence, Sea Park, Malaysia
2019-Present, Dato' Sri Yee Residence, USJ 5, Malaysia
2019-2020, Dion Residence, KL Sentral, Malaysia
2020-Present, Peyern Residence, Damansara Perdana, Malaysia
2020-Present, Haldane Residence, Sierramas, Malaysia
2020-Present, Choo Residence, Bukit Jalil, Malaysia

FOOD & BEVERAGE

2013, The Library Coffee Bar, Kuala Lumpur, Malaysia
2013, ZEN Japanese Bar, Empire Damansara, Malaysia
2014, Bumbu Desa, KLIA2, Malaysia
2014, Johnny Rockets, Sunway, Malaysia
2014, Quiznos Sub, Bandar Utama, Malaysia
2014, Purple Cane, Bukit Tinggi, Malaysia
2020, Union Artisan Coffee, 1MK, Malaysia
2021, KLIDC Dental Clini, Bangsar, Malaysia

RESIDENTIAL DEVELOPMENT

2006-2012, Lavendar Heights Housing, Senawang, Malaysia
2009-2010, Satori Condominium & Sea Villas, Beserah, Malaysia
2013-Present, Semi D Villas, Bukit Ledang, Malaysia
2014-Present, Pool Villas, Bukit Ledang, Malaysia
2014-Present, Mixed development, Kudat, Malaysia
2014-Present, Marina Gateway Mixed Development, Lumut, Malaysia
2017, Youth City Sales Gallery & Show units, Nilai, Malaysia
2019-2020, Residensi Lili Condominium Show units, Nilai, Malaysia
2021, Ritz Communities Condominium, Salak South, Malaysia

OFFICE

2009, Columbia Asia Office, Subang Jaya, Malaysia
2010, ZX Atelier Office, Neo Damansara, Malaysia
2010-2011, Setara Pelana Office, Solaris Publika, Malaysia
2012-2013, HPPC Bina Office, Solaris Publika, Malaysia
2014, FDCV Group Office, Kota Damansara, Malaysia
2016, Lumin Office, Menara Matrade, Malaysia
2017, UMR Office, USJ, Malaysia
2020-2021, Tadau Energy Office, Damansara Height, Malaysia

RETAIL / COMMERCIAL

2017, Running Lab, Pavilion, Malaysia
2017, Zcova, Kota Damansara, Malaysia
2019, Itsu, Vivacity, Sarawak, Malaysia
2019, Bagfairy, Kuala Lumpur, Malaysia
2020, Prestige Watch, Berjaya Timesquare, Malaysia
2021, ifruits, Klang, Malaysia
2021-Present, Prestige Watch, Genting Highlands, Malaysia

INSTITUTIONAL

2013-Ongoing, KVMRT control room, Sungai Buloh, Malaysia (ID)